

INTERNATIONAL WOMEN'S DAY

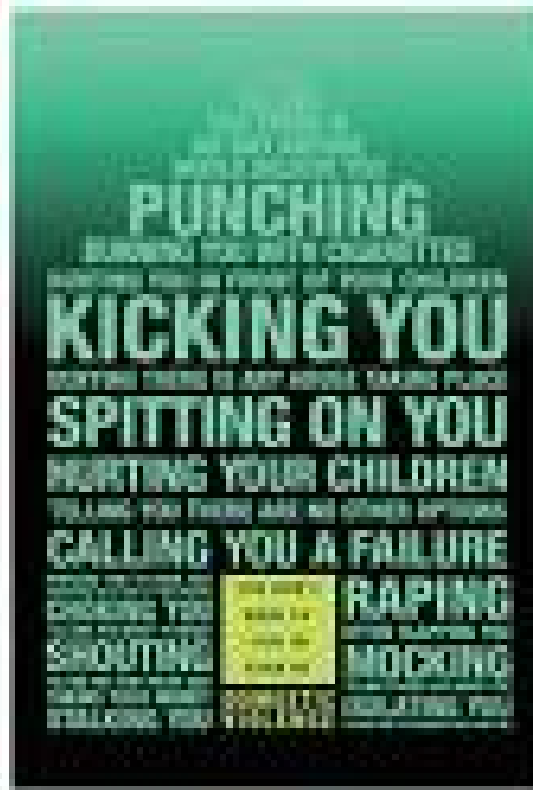
Each year around the world,

International Women's Day (IWD) is celebrated on **March 8**. Hundreds of events occur not just on this day but **throughout March** to mark the economic, political and social achievements of women.

Organizations, governments and women's groups around the world choose different themes each year that reflect global and local gender issues. Some years have seen global IWD themes honoured around the world, while in other years groups have preferred to 'localize' their own themes to make them more specific and relevant.

The **United Nation's** theme for International Women's Day **2009** is **Women and Men United to End Violence Against Women and Girls**.

TOSL has decided to put a twist on this theme and focus a little more on Domestic Violence Against Men by Women.



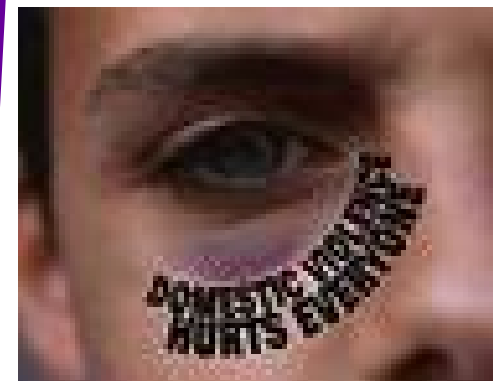
TOSL Engineering Limited

Business Address
8-10 Maharaj Avenue
Marabella
Phone: 868-657-7794
Fax: 868-657-7502

Published by: HSSEQ Department
March 2009

TOSL Engineering Limited

DOMESTIC VIOLENCE AGAINST MEN—THE UNSPOKEN PROBLEM



In 100 domestic violence situations approximately 40 cases involve

violence by women against men.

Think about domestic violence and you think of women, battered by their husband, boyfriend, or a man they are involved with or used to be involved with. Now, think again. Every year in the U.S., about 3.2 million men are the victims of an assault by an intimate partner. Most assaults are of a relatively minor nature such as pushing, shoving, slapping or hitting, though many are more serious - and some end in homicide.

HAGAR THE HORRIBLE | By Chris Browne



The problem in defense is how far you can go without destroying from within what you are trying to defend from without.

--Eisenhower

Why Does Domestic Abuse Against Men Go Unrecognized?

1) The incidence of domestic violence against men appears to be so low that it is hard to get reliable estimates.

2) It has taken years of advocacy and support to encourage women to report domestic violence. Virtually nothing has been done to encourage men to report abuse.

3) The idea that men could be victims of domestic abuse and violence is so unthinkable to most people that many men will not even attempt to report the situation.

4) The counseling and psychological community have responded to domestic abuse and violence against women. However there has been very little investment in resources to address the issues of domestic abuse and violence against men.

5) In most cases, the actual physical damage inflicted by men is so much greater than the actual physical harm inflicted by women. The impact of domestic violence is less apparent and less likely to come to the attention of others.

6) Even when men do report domestic abuse and violence, most people are so astonished, men usually end up feeling like nobody would believe them. It is widely assumed that a man with a bruise or black eye was in a fight with another man or was injured on the job or while playing contact sports.

Women generally don't do those things.

THE 'GARAGE DOOR' HE BUMPED INTO LAST NIGHT WAS FEMALE!



Men MUST report violent women

What Are The Characteristics Of Women Who Are Abusive And Violent?

Alcohol Abuse.

Alcohol abuse is a major cause and trigger in domestic violence. People who are intoxicated have less impulse control, are easily frustrated, have greater misunderstandings and are generally prone to resort to violence as a solution to problems. Women who abuse men are frequently alcoholics.

Psychological Disorders.

There are certain psychological problems, primarily personality disorders, in which women are characteristically abusive and violent toward men. Borderline personality disorder is a diagnosis that is found almost exclusively with women. Approximately 1 to 2 percent of all women have a Borderline Personality disorder. At least 50% of all domestic abuse and violence against men is associated with women who have a Borderline Personality disorder. The disorder is also associated with suicidal behavior, severe mood swings, lying, sexual problems and alcohol abuse.

Unrealistic expectations, assumptions and conclusions.

Women who are abusive toward men usually have unrealistic expectations and make unrealistic demands of men. These women will typically experience repeated episodes of depression, anxiety, frustration and irritability which they attribute to a man's behavior. In fact, their mental and emotional state is the result of their own insecurities, emotional problems, trauma during childhood or even withdrawal from alcohol. They blame men rather than admit their problems, take responsibility for how they live their lives or do something about how they make themselves miserable. They refuse to enter treatment and may even insist the man needs treatment. Instead of helping themselves, they blame a man for how they feel and believe that a man should do something to make them feel better. They will often medicate their emotions with alcohol. When men can't make them feel better, these women become frustrated and assume that men are doing this on purpose.

